

STANDARD ARRIVAL CHART
INSTRUMENT (STAR) - ICAO

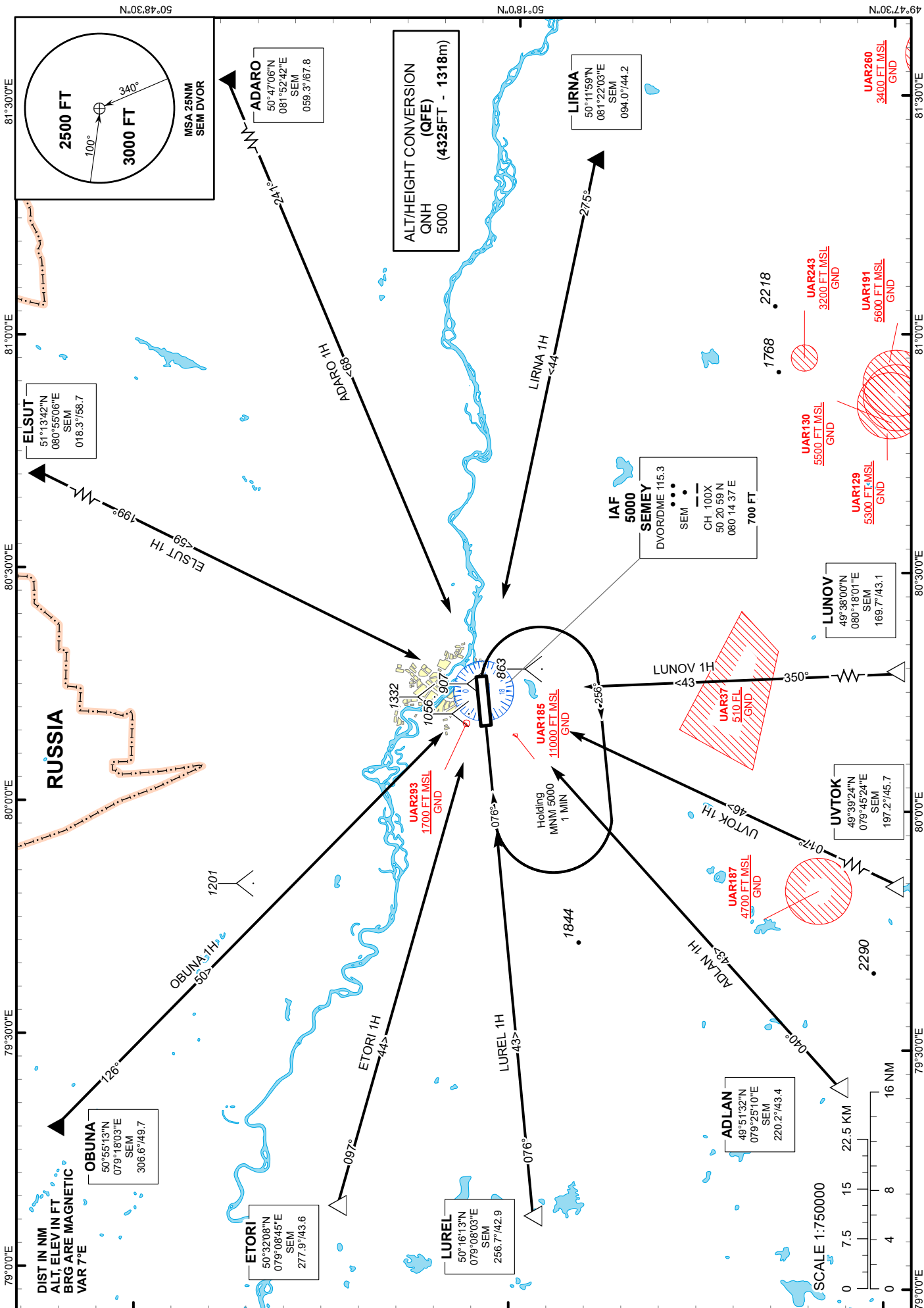
TRANSITION ALTITUDE
10000 FT

SEMEY TOWER 128.0
SEMEY ATIS (EN) 118.5
SEMEY ATIS (RU) 122.4

ADARO 1H, ADLAN 1H, ELSUT 1H,
ETORI 1H, LIRNA 1H, LUNOV 1H,
OBUNA 1H, LUREL 1H, UVTKO 1H

SEMEY
RWY 26

CHANGE: Renumbered.



STANDARD ARRIVAL ROUTES - INSTRUMENT (STAR) SEMEY RWY 26
ELSUT 1H After crossing ELSUT (R018.3° D58.7NM SEM), proceed on track 199° to SEM. Cross SEM at 5000 FT.
ADARO 1H After crossing ADARO (R059.3° D67.8NM SEM), proceed on track 241° to SEM. Cross SEM at 5000 FT.
LIRNA 1H After crossing LIRNA (R094.0° D44.2NM SEM), proceed on track 275° to SEM. Cross SEM at 5000 FT.
LUNOV 1H After crossing LUNOV (R169.7° D43.1NM SEM), proceed on track 350° to SEM. Cross SEM at 5000 FT.
UVTOK 1H After crossing UVTOK (R197.2° D45.7NM SEM), proceed on track 017° to SEM. Cross SEM at 5000 FT.
ADLAN 1H After crossing ADLAN (R220.2° D43.4NM SEM), proceed on track 040° to SEM. Cross SEM at 5000 FT.
LUREL 1H After crossing LUREL (R256.7° D42.9NM SEM), proceed on track 076° to SEM. Cross SEM at 5000 FT.
ETORI 1H After crossing ETORI (R277.9° D43.6NM SEM), proceed on track 097° to SEM. Cross SEM at 5000 FT.
OBUNA 1H After crossing OBUNA (R306.6° D49.7NM SEM), proceed on track 126° to SEM. Cross SEM at 5000 FT.